

We Think Everyone is Entitled to Simple, Solid, Supportable Equipment

ELEVATOR CONTROLS

What is Non-Proprietary?

To be considered Serviceable and Maintainable, Non-Proprietary equipment must include:

- **Onboard Diagnostics** – Everything needed to install, adjust, maintain and troubleshoot must be provided (preferably onboard).
- **Service Tool** (if any) – provides unrestricted access; free of any self-expiring technology.
- **Spare or Replacement Parts** – readily available at published prices without restriction.
- **Technical Support**
 - **Telephone Support** – provided by trained, experienced technicians without charge.
 - **Jobsite Support** – available by prior arrangement at reasonable cost.
 - **Training** – regularly scheduled classes available at reasonable cost to anyone.
- **Documentation** – Manuals, prints and reference materials provided with equipment, including as-built prints. Replacement copies readily and economically available.

Incorporate appropriate language in your Project Specifications to ensure that Serviceable and Maintainable equipment is provided.

About Elevator Controls

- ✓ **Simplified Products:** Our mission: provide "Simple, Solid, Supportable" products that are easy to install, adjust and maintain.
- ✓ **No Charge Phone Support:** We are committed to top service... including free telephone support for customers.
- ✓ **Usability:** "*Learn One, Know All*" architecture plus trademark PC board interchangeability and backward compatibility make EC your most maintainable choice.
- ✓ **Full Line:** Controls from Hydraulic to geared and gearless AC, DC and MRL Traction.
- ✓ **Compliance Assured:**
 - TSSA Certification for A17.1-200x
 - EMI-RFI Certification
 - CSA Labeled Equipment

Watch Out For...

Many factors can restrict or constrain equipment Serviceability and Maintainability including:

One Manufacturer, Many Platforms

When the low rise, high rise and parking garage use control systems with little in common...

- **Training & Support are Compromised** by lack of standardization; longer learning curve.
- **Maintainability is Compromised** by multiple board and software versions.

Excessive Board Integration

- **Extreme Consolidation** diminishes serviceability by eliminating modularity.
- **"Motherboard" Replacement costs** can readily become excessive.

Proprietary Monitoring System

- **Require Interoperability** with equipment from multiple manufacturers.
- **Assure Backward Compatibility** will be maintained for older, in place equipment.
- **A Single Standard Monitoring Platform** must interoperate with future equipment.

Premature Obsolescence

Study Manufacturer's History for possible...

- **Arbitrary Termination** of a model or platform and/or technical support for it.
- **Sudden Curtailment** of spare and replacement parts availability.

Proprietary System Hardware

- Exotic ropes
- Unique machines and drive technologies
- Nonstandard dispatching schemes
- Counter-intuitive call registration methods

Corporate Conflict of Interest

- Non-Proprietary manufacturer owned by Proprietary corporate parent

Elevator Controls Corp is Proud to Support



www.elevatorcontrols.com

ELECTRIC PASSENGER ELEVATORS
FRONT ENTRANCE
RATED SPEEDS 500-700 ft/min

SPEED ft/min	ft-in					
	h1					d3
	RATED LOAD (lb)					
	2000	2500	3000	3500	4000	
500	19-4	18-11	19-5	18-0	18-2	6-6
700	20-1	19-10	20-6	19-0	18-11	9-3

RATED LOAD (lb)	CAR & HOISTWAY							MACHINE ROOM			
	AREA (b)	ft-in					ENTRANCE TYPE	ft-in			
		b1	d1	b3	d2	b2		b4(1)	b4(2)	h2	d4
2000	24.2	5-8	4-3	7-4 (a)	6-11	3-0	SSSO (e)	9-0	18-4	8-6	16-0
2500	29.1	6-8	4-3	8-4 (a)	6-11	3-6	SSSO (c) SSCO (e)	10-0	18-8	8-6	16-0
3000	33.7	6-8	4-7	8-4 (a)	7-5	3-6	SSSO (c) SSCO (e)	10-0	18-8	8-6	16-0
3500	38.0	6-8	5-3	8-4 (a)	8-1	3-6	SSSO (c) SSCO (c)	10-0	18-8	8-6	16-0
4000	42.2	7-8	5-3	9-6	8-1	3-6	SSSO (d)	11-0	20-8	8-6	16-0
4000	42.2	7-8	5-3	9-6	8-1	4-0	SSCO (c)	11-0	20-8	8-6	16-0

Notes:

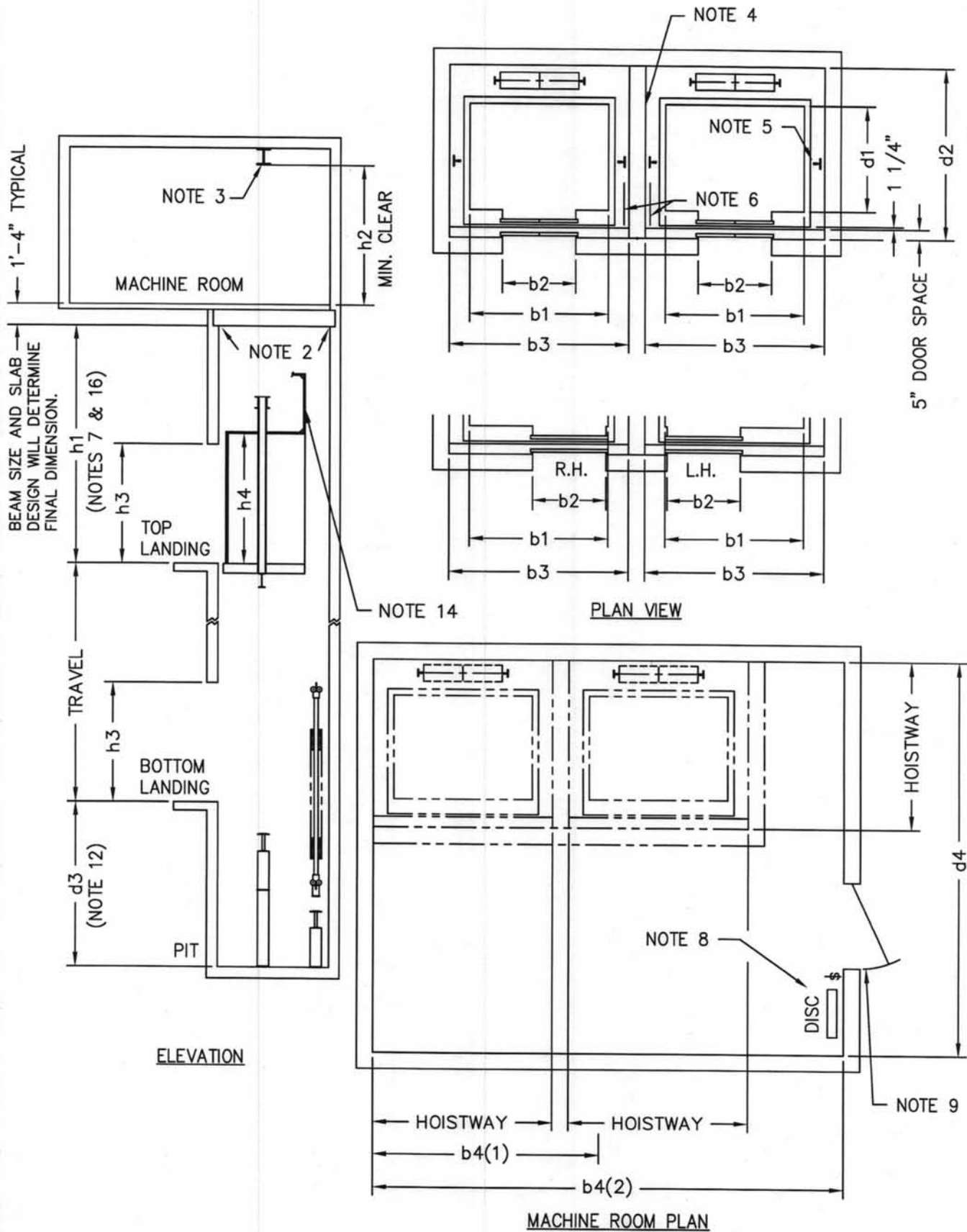
1. Hoistway width, "b3", may need to be increased when decorative car materials exceeding 1/2" are used. The "b3" dimension would be increased by twice the amount that the material exceeds 1/2" in thickness. This is required to meet accessibility requirements on those sizes marked by "(a)". Consult elevator supplier.
2. Supports for elevator machine beams not by elevator supplier. Refer to Machine Support Details.
3. Hoisting beams not by elevator supplier.
4. Divider beams, not by elevator supplier, to be designed to sustain rail forces. Consult elevator supplier.
5. Refer to Guide Rail Bracket Fastening Details.
6. Pit ladder not by elevator supplier. Hoistway width allows for the installation of a pit ladder with a clearance of 4 1/2" from centerline of rungs. When additional clearance is required, alternative provisions need to be considered.
7. "h1" dimensions are based on (h4) of 8'-0" to the top of the car enclosure.
8. Location of the main power disconnecting means, the car light disconnecting means and lighting switch shall be in accordance with requirements of NFPA 70.
9. 3'-6" X 6'-8" recommended machine room door size.
10. Refer to the Hoistway Entrance Details for information on required hoistway door sill supports, etc.
11. When seismic requirements apply, additional hoistway space may be required. See General Notes section.

Notes:

12. Increased pit depth may be required to accommodate rope compensation requirements. Consult elevator supplier.
13. "h3" = 7'-0" nominal.
14. Standard railing where required by ASME A17.1/CSA B44.
15. Machine room spaces shown are minimum. If ductwork, equipment, access doors in floor, columns and/or windbracing are in this area, additional space will be required. Consult elevator supplier for additional space requirements.
16. "h1" dimension may be reduced depending on roping arrangement, e.g. 1:1, consult elevator supplier.
 - (a) See Note 1.
 - (b) Maximum allowable inside car area in ft² per ASME A17.1/CSA B44.
 - (c) These car dimensions and entrance types provide wheelchair accessibility and accommodate an ambulance type stretcher (76" X 24") in the horizontal position. The 3500 lb capacity with SSCO will provide adequate space if "d1" is at least 5'-5".
 - (d) These car dimensions and entrance types provide wheelchair accessibility and accommodate an ambulance type stretcher (84" X 24") in the horizontal position as required by the IBC.
 - (e) These car dimensions and entrance types provide wheelchair accessibility.

ELECTRIC PASSENGER ELEVATORS

RATED SPEEDS 500-700 ft/min



ELECTRIC PASSENGER ELEVATORS
FRONT & REAR ENTRANCES
RATED SPEEDS 200-450 ft/min

SPEED ft/min	ft-in	
	h1	d3
200	15-8	5-6
350 (f)	17-0	5-9
400	17-3	6-0
450	18-0	6-3

RATED LOAD (lb)	CAR & HOISTWAY							MACHINE ROOM		
	AREA (b)	ft-in					ENTRANCE TYPE	ft-in		
		b1	d1	b3	d2 (g)	b2		b4	h2	d4
2000	24.2	5-8	4-3	8-8 (a)	6-9	3-0	SSSO (e)	17-8	8-0	15-0
2500	29.1	6-8	4-3	9-9 (a)	6-9	3-6	SSSO (c) SSCO (e)	19-10	8-0	15-0
3000	33.7	6-8	4-7	9-9 (a)	7-1	3-6	SSSO (c) SSCO (e)	19-10	8-0	15-0
3500	38.0	6-8	5-3	9-10 (a)	7-9	3-6	SSSO (c) SSCO (c)	20-0	8-0	15-0
4000	42.2	7-8	5-3	10-10	7-9	3-6	SSSO (d)	22-0	8-0	15-0
4000	42.2	7-8	5-3	10-10	7-9	4-0	SSCO (c)	22-0	8-0	15-0

Notes:

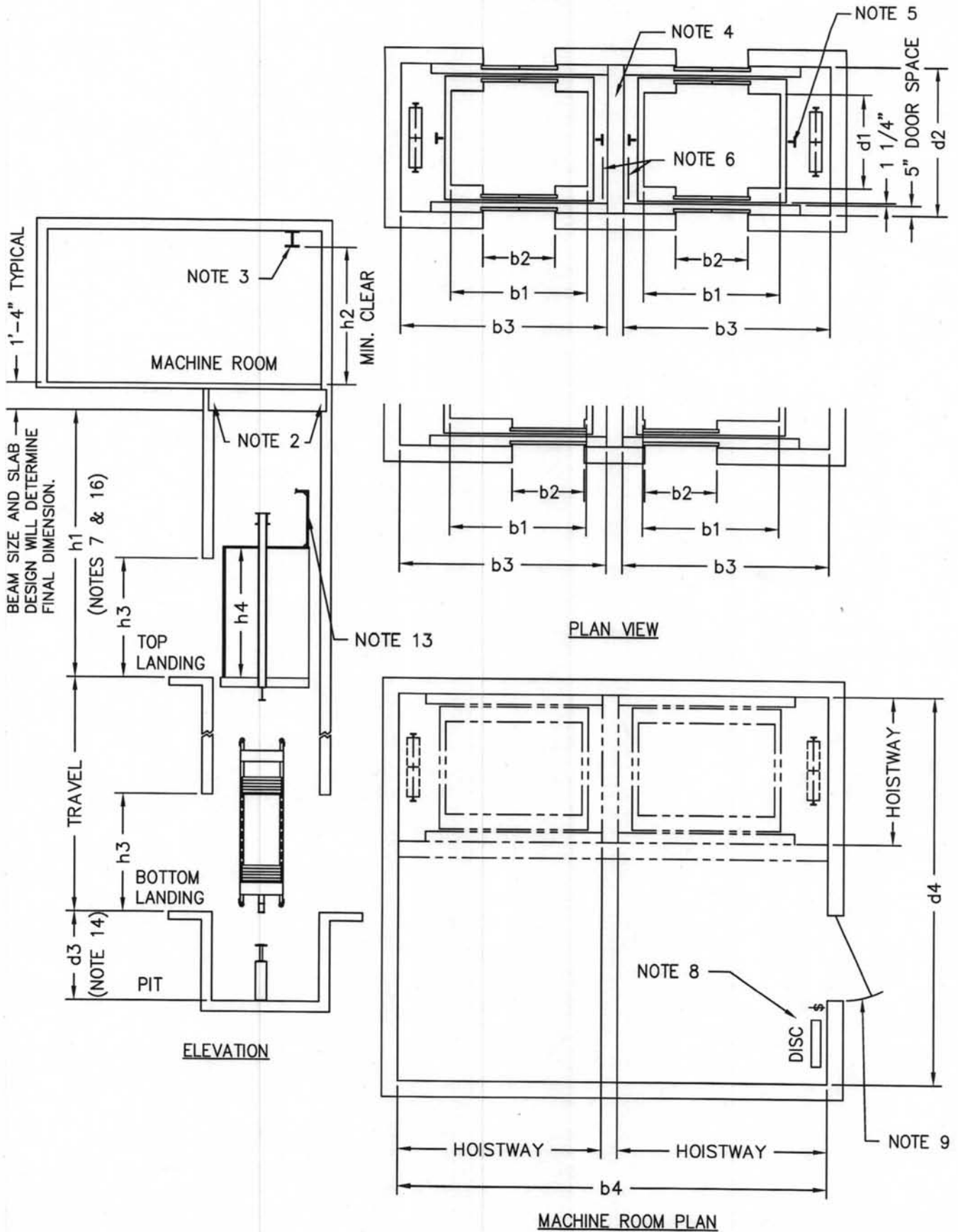
1. Hoistway width, "b3", may need to be increased when decorative car materials exceeding 1/2" are used. The "b3" dimension would be increased by twice the amount that the material exceeds 1/2" in thickness. This is required to meet accessibility requirements on those sizes marked by "(a)". Consult elevator supplier.
2. Supports for elevator machine beams not by elevator supplier. Refer to Machine Support Details.
3. Hoisting beams not by elevator supplier.
4. Divider beams, not by elevator supplier, to be designed to sustain rail forces. Consult elevator supplier.
5. Refer to Guide Rail Bracket Fastening Details.
6. Pit ladder not by elevator supplier. Hoistway width allows for the installation of a pit ladder with a clearance of 4 1/2" from centerline of rungs. When additional clearance is required, alternative provisions need to be considered.
7. "h1" dimensions are based on (h4) of 8'-0" to the top of the car enclosure.
8. Location of the main power disconnecting means, the car light disconnecting means and lighting switch shall be in accordance with requirements of NFPA 70.
9. 3'-6" X 6'-8" recommended machine room door size.
10. Refer to the Hoistway Entrance Details for information on required hoistway door sill supports, etc.
11. When seismic requirements apply, additional hoistway space may be required. See General Notes section.
12. "h3" = 7'-0" nominal.

Notes:

13. Standard railing where required by ASME A17.1/CSA B44.
14. For travel greater than 100'-0", increased pit depth may be required to accommodate compensation requirements. Consult elevator supplier.
15. Machine room spaces shown are minimum. If ductwork, equipment, access doors in floor, columns and/or windbracing are in this area, additional space will be required. Consult elevator supplier for additional space requirements.
16. "h1" dimension may be reduced depending on roping arrangement, e.g. 1:1, consult elevator supplier.
 - (a) See Note 1.
 - (b) Maximum allowable inside car area in ft² per ASME A17.1/CSA B44.
 - (c) These car dimensions and entrance types provide wheelchair accessibility and accommodate an ambulance type stretcher (76" X 24") in the horizontal position. The 3500 lb capacity with SSCO will provide adequate space if "d1" is at least 5'-5".
 - (d) These car dimensions and entrance types provide wheelchair accessibility and accommodate an ambulance type stretcher (84" X 24") in the horizontal position as required by IBC.
 - (e) These car dimensions and entrance types provide wheelchair accessibility.
 - (f) This is the most commonly used speed.
 - (g) The dimensions shown cover a wide range of elevator manufacturers' requirements and should be used only for general guidance in preliminary planning. For specific dimensions, consult elevator supplier.

ELECTRIC PASSENGER ELEVATORS

FRONT & REAR ENTRANCES
RATED SPEEDS 200-450 ft/min



ELECTRIC PASSENGER ELEVATORS
FRONT ENTRANCE
RATED SPEEDS 150-450 ft/min

SPEED ft/min	ENTRANCE	
	h1(2:1)	d3
150	14-1	5-1
200	14-1	5-6
250	14-1	5-6
300	14-1	5-6
350 (f)	16-5	5-9
400	16-9	6-0
450	17-6	6-6

B3 width
D2 Depth

RATED LOAD (lb)	CAR & HOISTWAY							MACHINE ROOM				
	AREA (b)	ft-in					ENTRANCE TYPE	ft-in				
		b1	d1	b3	d2	b2		b4(1)	b4(2)	h2	d4	
2000	24.2	5-8	4-3	7-4 (a)	6-8	3-0	SSSO (e)		7-4	15-0	8-0	16-0
2500	29.1	6-8	4-3	8-4 (a)	6-8	3-6	SSSO (c)	SSCO (e)	8-4	17-0	8-0	16-0
3000	33.7	6-8	4-7	8-4 (a)	7-2	3-6	SSSO (c)	SSCO (e)	8-4	17-0	8-0	16-0
3500	38.0	6-8	5-3	8-4 (a)	7-10	3-6	SSSO (c)	SSCO (c)	8-4	17-0	8-0	16-0
4000	42.2	7-8	5-3	9-6	7-10	3-6	SSSO (d)		9-6	19-4	8-0	16-0
4000	42.2	7-8	5-3	9-6	7-10	4-0	SSCO (c)		9-6	19-4	8-0	16-0

Notes:

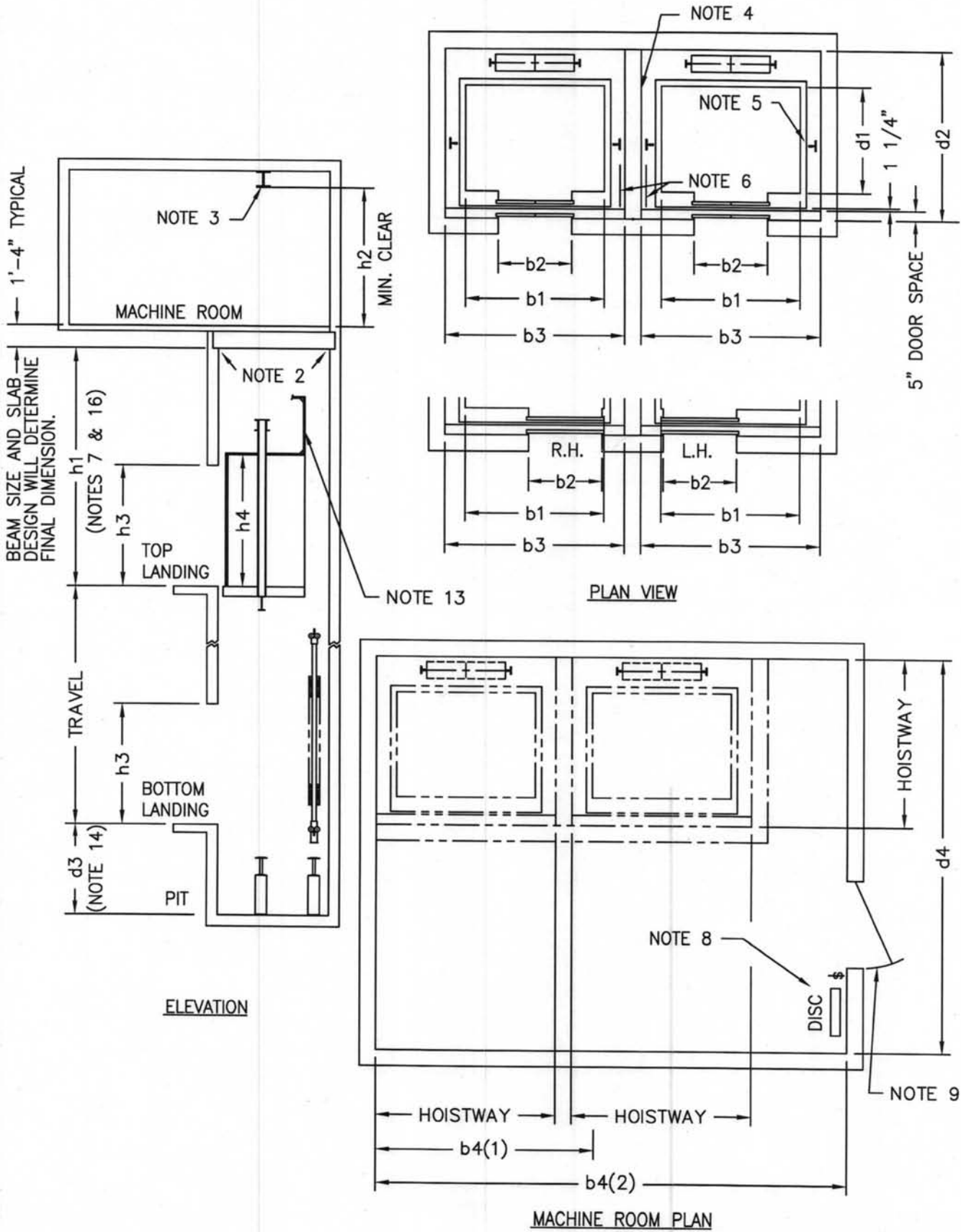
- Hoistway width, "b3", may need to be increased when decorative car materials exceeding 1/2" are used. The "b3" dimension would be increased by twice the amount that the material exceeds 1/2" in thickness. This is required to meet accessibility requirements on those sizes marked by "(a)". Consult elevator supplier.
- Supports for elevator machine beams not by elevator supplier. Refer to Machine Support Details.
- Hoisting beams not by elevator supplier.
- Divider beams, not by elevator supplier, to be designed to sustain rail forces. Consult elevator supplier.
- Refer to Guide Rail Bracket Fastening Details.
- Pit ladder not by elevator supplier. Hoistway width allows for the installation of a pit ladder with a clearance of 4 1/2" from centerline of rungs. When additional clearance is required, alternative provisions need to be considered.
- "h1" dimensions are based on (h4) of 8'-0" to the top of the car enclosure.
- Location of the main power disconnecting means, the car light disconnecting means and lighting switch shall be in accordance with requirements of NFPA 70.
- 3'-6" X 6'-8" recommended machine room door size.
- Refer to the Hoistway Entrance Details for information on required hoistway door sill supports, etc.
- When seismic requirements apply, additional hoistway space may be required. See General Notes section.

Notes:

- "h3" = 7'-0" nominal.
 - Standard railing where required by ASME A17.1/CSA B44.
 - For travel greater than 100'-0", increased pit depth may be required to accommodate compensation requirements. Consult elevator supplier.
 - Machine room spaces shown are minimum. If ductwork, equipment, access doors in floor, columns and/or windbracing are in this area, additional space will be required. Consult elevator supplier for additional space requirements.
 - "h1" dimension may be reduced depending on roping arrangement, e.g. 1:1, consult elevator supplier.
- (a) See Note 1.
 (b) Maximum allowable inside car area in ft² per ASME A17.1/CSA B44.
 (c) These car dimensions and entrance types provide wheelchair accessibility and accommodate an ambulance type stretcher (76" X 24") in the horizontal position. The 3500 lb capacity with SSCO will provide adequate space if "d1" is at least 5'-5".
 (d) These car dimensions and entrance types provide wheelchair accessibility and accommodate an ambulance type stretcher (84" X 24") in the horizontal position as required by the IBC.
 (e) These car dimensions and entrance types provide wheelchair accessibility.
 (f) This is the most commonly used speed.

ELECTRIC PASSENGER ELEVATORS

FRONT ENTRANCE
RATED SPEEDS 150-450 ft/min



ELECTRIC HOSPITAL ELEVATORS
FRONT ENTRANCE OR FRONT & REAR ENTRANCES
RATED SPEEDS 500-700 ft/min

SPEED	ft-in	
	h1	d3
500	18-1	6-6
700	20-0	9-3

RATED LOAD (lb)	CAR & HOISTWAY								MACHINE ROOM			
	AREA (b)	ft-in						ENTRANCE TYPE	ft-in			
		b1	d1	b3	d2(F)	(d) d2(F/R)	b2		b4(1)	b4(2)	h2	d4
4000	42.2	5-8	7-4	8-2 (a)	9-3	10-4	4-0	2SSO (c)	9-6	19-5	8-6	19-0
4500	46.2	5-8	7-10	8-2 (a)	10-0	11-0	4-0		9-10	20-0	8-6	19-0
5000	50.0	5-8	8-6	8-2 (a)	10-5	11-6	4-0		10-1	20-6	8-6	19-6

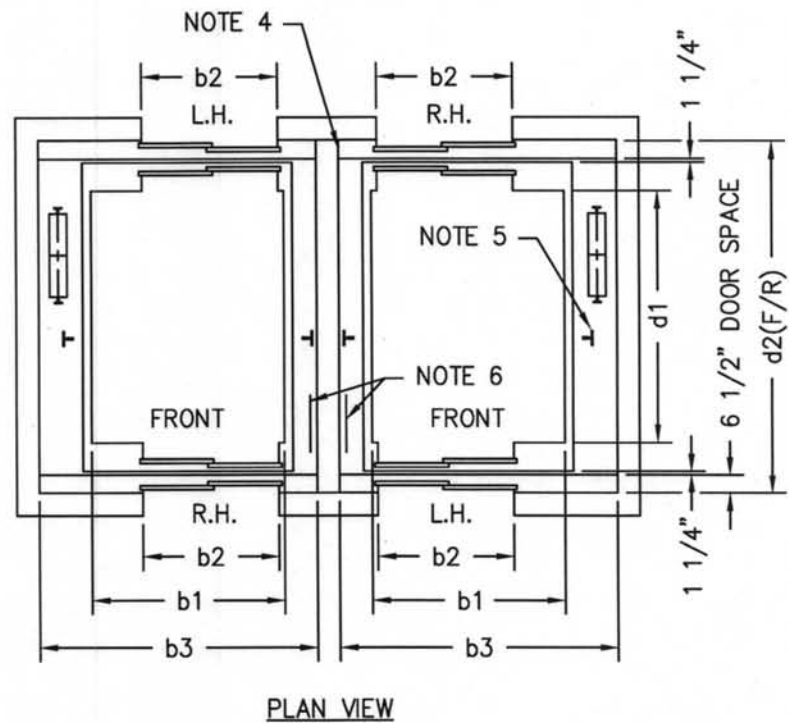
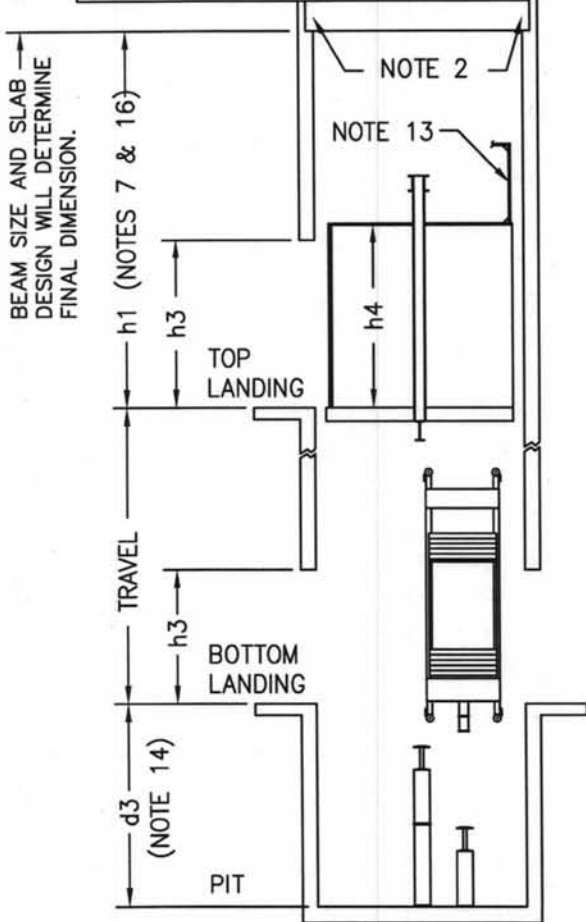
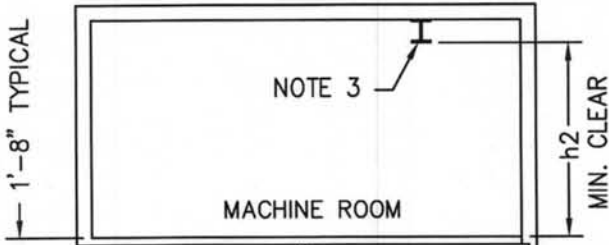
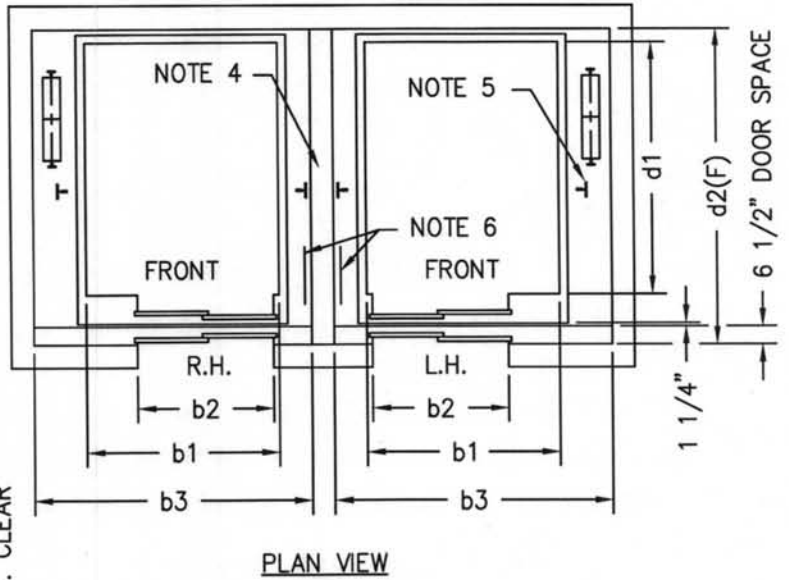
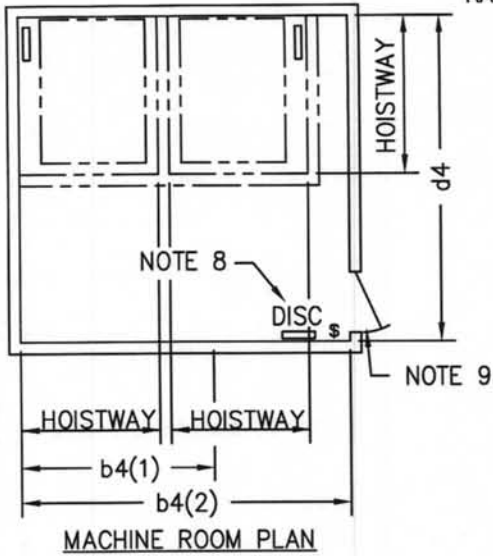
Notes:

1. Hoistway width, "b3", may need to be increased when decorative car materials exceeding 1/2" are used. The "b3" dimension would be increased by twice the amount that the material exceeds 1/2" in thickness. This is required to meet accessibility requirements on those sizes marked by "(a)". Consult elevator supplier.
2. Supports for elevator machine beams not by elevator supplier. Refer to Machine Support Details.
3. Hoisting beams not by elevator supplier.
4. Divider beams, not by elevator supplier, to be designed to sustain rail forces. Consult elevator supplier.
5. Refer to Guide Rail Bracket Fastening Details.
6. Pit ladder not by elevator supplier. Hoistway width allows for the installation of a pit ladder with a clearance of 4 1/2" from centerline of rungs. When additional clearance is required, alternative provisions need to be considered.
7. "h1" dimensions are based on (h4) of 8'-0" to the top of the car enclosure.
8. Location of the main power disconnecting means, the car light disconnecting means and lighting switch shall be in accordance with requirements of NFPA 70.
9. 3'-6" X 6'-8" recommended machine room door size.
10. Refer to the Hoistway Entrance Details for information on required hoistway door sill supports, etc.
11. When seismic requirements apply, additional hoistway space may be required. See General Notes section.

Notes:

12. "h3" = 7'-0" nominal.
13. Standard railing where required by ASME A17.1/CSA B44.
14. For travel greater than 100'-0", increased pit depth may be required to accommodate rope compensation requirements. Consult elevator supplier.
15. Machine room spaces shown are minimum. If ductwork, equipment, access doors in floor, columns and/or windbracing are in this area, additional space will be required. Consult elevator supplier for additional space requirements.
16. "h1" dimension may be reduced depending on roping arrangement, e.g. 1:1, consult elevator supplier.
 - (a) See Note 1.
 - (b) Maximum allowable inside car area in ft² per ASME A17.1/CSA B44.
 - (c) These car dimensions and entrance types provide wheelchair accessibility and accommodate an ambulance type stretcher (84" X 24") in the horizontal position.
 - (d) The dimensions shown cover a wide range of elevator manufacturers' requirements and should be used only for general guidance in preliminary planning. For specific dimensions, consult elevator supplier.

ELECTRIC HOSPITAL ELEVATORS
 FRONT ENTRANCE OR FRONT & REAR ENTRANCES
 RATED SPEEDS 500-700 ft/min



ELECTRIC HOSPITAL ELEVATORS
FRONT ENTRANCE OR FRONT & REAR ENTRANCES
RATED SPEEDS 150-450 ft/min

ft-in		
h1	d3	
	150-400	450
16-9	5-9	6-6

RATED LOAD (lb)	CAR & HOISTWAY								MACHINE ROOM			
	AREA (b)	ft-in						ENTRANCE TYPE	ft-in			
		b1	d1	b3	d2(F)	d2(F/R)(d)	b2		b4(1)	b4(2)	h2	d4
4000	42.2	5-8	7-4	8-2 (a)	9-3	10-4	4-0	2SSO (c)	8-2	16-9	8-0	18-6
4500	46.2	5-8	7-10	8-2 (a)	10-0	11-0	4-0		8-2	16-9	8-0	18-6
5000	50.0	5-8	8-6	8-2 (a)	10-5	11-6	4-0		8-5	17-2	8-0	18-6

Notes:

1. Hoistway width, "b3", may need to be increased when decorative car materials exceeding 1/2" are used. The "b3" dimension would be increased by twice the amount that the material exceeds 1/2" in thickness. This is required to meet accessibility requirements on those sizes marked by "(a)". Consult elevator supplier.
2. Supports for elevator machine beams not by elevator supplier. Refer to Machine Support Details.
3. Hoisting beams not by elevator supplier.
4. Divider beams, not by elevator supplier, to be designed to sustain rail forces. Consult elevator supplier.
5. Refer to Guide Rail Bracket Fastening Details.
6. Pit ladder not by elevator supplier. Hoistway width allows for the installation of a pit ladder with a clearance of 4 1/2" from centerline of rungs. When additional clearance is required, alternative provisions need to be considered.
7. "h1" dimensions are based on (h4) of 8'-0" to the top of the car enclosure.
8. Location of the main power disconnecting means, the car light disconnecting means and lighting switch shall be in accordance with requirements of NFPA 70.
9. 3'-6" X 6'-8" recommended machine room door size.
10. Refer to the Hoistway Entrance Details for information on required hoistway door sill supports, etc.

Notes:

11. When seismic requirements apply, additional hoistway space may be required. See General Notes section.
12. "h3" = 7'-0" nominal.
13. Standard railing where required by ASME A17.1/CSA B44.
14. For travel greater than 100'-0", increased pit depth may be required to accommodate compensation requirements. Consult elevator supplier.
15. Machine room spaces shown are minimum. If ductwork, equipment, access doors in floor, columns and/or windbracing are in this area, additional space will be required. Consult elevator supplier for additional space requirements.
16. "h1" dimension may be reduced depending on roping arrangement, e.g. 1:1, consult elevator supplier.
 - (a) See Note 1.
 - (b) Maximum allowable inside car area in ft² per ASME A17.1/CSA B44.
 - (c) These car dimensions and entrance types provide wheelchair accessibility and accommodate an ambulance type stretcher (84" X 24") in the horizontal position.
 - (d) The dimensions shown cover a wide range of elevator manufacturers' requirements and should be used only for general guidance in preliminary planning. For specific dimensions, consult elevator supplier.